



Sign Making Software

SA International

Flexi • PhotoPRINT • EnRoute

A Complete Sign Making Solution

From sign design to RIP to routing, SA International has software to suit your needs! Their products have the quality, ease of use and dependability trusted by thousands of sign shops. With Flexi, PhotoPrint and EnRoute software, you'll find user-friendly, feature-rich, dependable solutions for all of your sign making projects.

Flexi Family of Software

Flexi sign-making software provides you with a powerful yet easy way to design, RIP and print your signs. The user interface is made for sign makers, so you can quickly move from one task to the next, increasing productivity.



Flexi gives you a complete design, RIP and print application in one great product!

Designing made easy!

With Flexi, you have intuitive design tools at your fingertips. Before you even get started, you can set Flexi's workspace to look and feel like your favorite design software—Omega, CorelDRAW, Adobe, and others. Flexi features SmartObjects and Smart Tools to make the design process fast and easy. Quickly create or edit gradients, fills or strokes using the Fill/Stroke editor. DesignCentral provides you with an interactive menu system that changes with each tool selection, so there's no confusion about the options available for the current tool. Designing is simple and under control with Flexi!

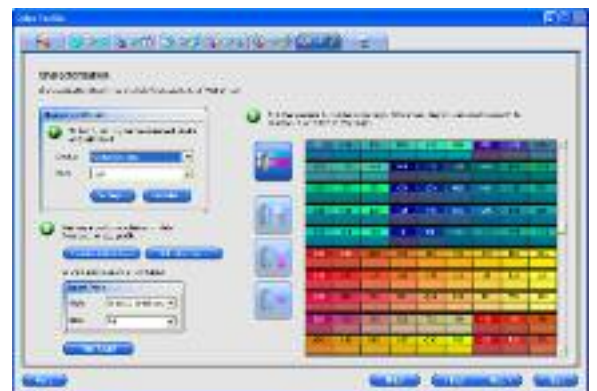


Cutting is a snap!

Flexi allows you to print and contour cut on any printer/cutter, including the Gerber EDGE FX! Flexi also gives you the ability to directly import PLT files from Gerber Graphix Advantage™ and Gerber Omega™. Flexi has a special four-point alignment system that will account for possible

media skew or distortion, and produce accurate cuts. Flexi also supports the automatic sensing capability of the latest cutter models, enabling ideal, perfect output!

And, Flexi has a true Adobe RIP engine, so your prints are guaranteed to be accurate. Flexi comes in several different versions, so you can choose the one with the toolset that best suits your shop—and your budget!



Flexi guides you through color profiling, so you can be sure your prints will come out with the color results you expect.



Excellence Beyond ExpectationsSM

Contact Midwest to find out more about Flexi, PhotoPrint, and EnRoute software products from SA International!

www.midwestsign.com

Turn over this page to learn about PhotoPRINT RIP and EnRoute software!



photoPRINT6

More than Just a RIP!

With PhotoPRINT, you get an easy-to-use interface that guides you through the whole RIP process. Plus, you get powerful color management tools, including the new Variations feature (see image on right) that make color corrections a snap! PhotoPRINT supports up to 16 true color channels and allows you to create custom ICC profiles for printers with the user-friendly Color Profiler.

You can define two media sizes to be used simultaneously, and print from any application! No matter which PhotoPRINT version you choose, you'll be sure to save time and confusion while increasing your productivity.



PhotoPrint helps you easily color correct your projects with the Variations feature in the Print Wizard.

EnRoute Makes Routing Easier!

EnRoute is a versatile, professional CAD/CAM software that combines state-of-the-art technology and tools you can quickly learn, master and operate. Complete text object, drawing, editing, shape measure and dimension tools are all included in EnRoute. Plus, Quick Fit Nesting quickly and easily makes your object fit where it needs to fit. For relief editing, just use the touchup tools or create one from scratch by using your mouse like a hammer and chisel.



SAi Software is Perfect for Use with:

- Most Gerber Equipment
- Mimaki JV Series Printers
- Mimaki FX Series Cutters
- Mimaki CG Series Cutters
- Roland VersaCAMM® Printers
- Roland SOLJET™ PRO III Printers
- Roland AdvancedJET Series Printers
- And many more!

Need to Get an "EDGE" on the Competition?

Midwest is an authorized distributor of Gerber's full line of equipment, including the EDGE FX! We're your one-stop shop for EDGE-Ready materials and Gerber accessories and supplies!



 **GERBER SCIENTIFIC PRODUCTS**

Contact Midwest today to get started with user-friendly software from SA International!

MINNESOTA
800-328-6592

CALIFORNIA
800-824-2468



midwest

sign & screen printing supply co.

Excellence Beyond ExpectationsSM

COLORADO
800-332-3819

MISSOURI
800-233-3770

NEBRASKA
800-228-3839

OREGON
800-228-0596

UTAH
800-497-6690

WASHINGTON
800-426-4938

WISCONSIN
800-242-7430

www.midwestsign.com