

# JV400LX Series

## Wide Format Inkjet Printer



The JV400LX Series, engineered with the latest ink technologies, is the world's first with White Latex Ink!



### Features & Benefits

- Uses the world's first white latex ink - making your colors more vivid on transparent film!
- Uses eco-friendly water-based LX100 Inks
- Eco-cartridges can be used repeatedly, helping to lower prices and waste
- Selectable color modes (8 ink cartridges, two configurations: CMYK + White or double CMYK)
- Newly developed high-speed print heads for top quality results with fail-safe features
- Excellent usage for outdoor and indoor applications
- Print on... uncoated media and textiles, as well as media used in eco-solvent printers like PVC film and banner material!

### REVOLUTIONARY INK OPTIONS

#### LX100 Inks

This eco-friendly water-based ink does not need special ventilating equipment, is safer for operators, and is better for the environment.



C, M, Y, K, Lc, Lm = 600 ml Ink Pack\* White = 220 ml Ink Cartridge \*Utilizes Eco-Cartridge

Choose your Ink Color Configuration	
*Eight ink cartridges are inserted at time of installation	
<b>7-Color Mode</b> CMYKLcLM + White	<b>4-Color Mode</b> Double CMYK
Print with White Latex Ink!	For higher productivity, like billboard printing

#### White Latex Ink

White ink helps retain the natural vividness of colors by being used as a base to print on transparent or colored materials. It is very effective in the manufacture of clear film window graphics etc.

#### Eco-Cartridge Method

Eco-cartridges can be repeatedly used by changing spent ink packs. This eco-cartridge method contributes to waste reduction and can provide ink at lower prices.

\* 1: Ink pack capacity is 600 ml. \* 2: LX100 white ink is for 220 ml ink cartridge.



# JV400LX Series Wide Format Inkjet Printer

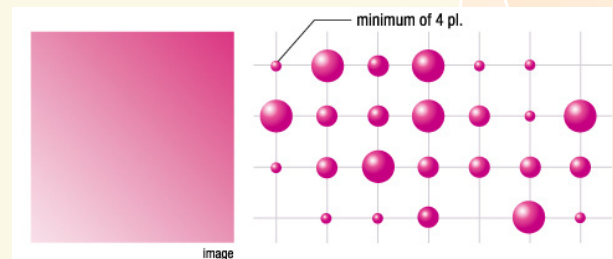


## ADVANCED TECHNOLOGY

### High Speed Print Heads with Advanced Technology

- Two newly developed print heads with four rows of 320 nozzles per head are arranged in a single line, enabling *high-speed printing* with top quality results.
- *Multidrop function* provides three different drop sizes at once (with minimum of 4 pl), producing smooth printing results.
- *Fail-Safe Features* for Continuous Operation including a Nozzle Recovery Function and UISS (Uninterrupted Ink Supply System.) These features prevent the printer from stopping while producing large volumes of output, making it especially useful for unattended overnight printing.

Print Speeds	
900x900dpi, 6 pass, bi	195 ft <sup>2</sup> /hr (18.1m)
900x1200dpi, 8 pass, bi	152 ft <sup>2</sup> /hr (14.2m)
*All are 4-color mode print speeds	



## INDOOR & OUTDOOR APPLICATIONS



### Excellent Usage and Media Capability with Latex Ink

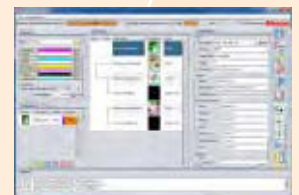
Latex ink fixes pigment to media because resin contained in the ink dissolves with the heater, forming a membrane. Therefore, it can be printed on PVC film, banner material, backlit films and most media types that are currently used in eco-solvent machines. Many uncoated materials such as paper and textile can be printed as well.

- 140° F (60 °C) cold cure expands capability for various heat-sensitive media
- No drying time - Immediate secondary processing/lamination

## SOFTWARE RIP (INCLUDED)

### RasterLink 6

The new RasterLink6 is focused on combining usability and high performance. With its many new functions, the "Software RIP for Everybody" provides for more professional and advanced finished products with its ease of use.



# JV400LX Series Wide Format Inkjet Printer



## SPECIFICATIONS

		<i>JV400-130LX</i>	<i>JV400-160LX</i>
Head		On-demand Piezo head (Array of 2 heads in-line)	
Maximum Width		1,361mm (53.6")	1,610mm (63.4")
Print Resolution		600, 900, 1,200dpi	
Print Speed	High Speed	195 ft <sup>2</sup> /h (18.1 m) (900×900dpi, 6pass, bi-directional, 4 color)	
	Standard	152 ft <sup>2</sup> /h (14.2 m) (900×1,200dpi, 8pass, bi-directional, 4 color)	
Ink	Latex Ink LX100 System	7 Color (C, M, Y, K, Lc, Lm, W)	
	Ink Supply System	600 ml ink pack (LX100 white ink is for 220 ml ink cartridge)	
Media	Width	Up to 1,371mm (54.0")	1,620mm (63.8")
	Weight	Up to 25kg (55.1 lbs)	
	Roll diameter	Up to 180mm (7.1")	
	Inside roll diameter	2 - 3 inch	
	Print aspect	Inside / Outside	
	Cutter	Y-direction cutter	
Drying Device		3 way intelligent heater (Pre/Print/After) Ventilation fan unit, Drying fan heater	
Media Take-Up Device		Roll take-up device, inside/outside selectable	
Interface		USB 2.0	
Applicable Standard		VCCI class A, FCC class A, UL 60950-1 CE Marking (EMC, Low voltage and Machinery directive), CB Report	
Power Specification		AC 100 240V±10% (Automated voltage conversion)	
Power Consumption	100 - 120V	1,440W × 2	
	220 - 240V	1,800W × 2	
Dimensions		103.5"×33.7"×56.4	113.2"×33.7"×56.4"
Weight		476 lb (216kg)	509 lbs (231kg)

**Contact your Midwest Representative today for more information on the JV400LX Series!**

**MINNESOTA**  
800-328-6592

**CALIFORNIA**  
800-824-2468



**COLORADO**  
800-332-3819

**MISSOURI**  
800-233-3770

**NEBRASKA**  
800-228-3839

**OREGON**  
800-228-0596

**UTAH**  
800-497-6690

**WASHINGTON**  
800-426-4938

**WISCONSIN**  
800-242-7430



www.midwestsign.com  
estore.midwestsign.com



MIMAKI

MIMAKI

MIMAKI

MIMAKI

MIMAKI

MIMAKI

MIMAKI